

RETAIL SPACE FOR LEASE

2820 Guadalupe



4,632 SF AVAILABLE
\$22.00 NNN

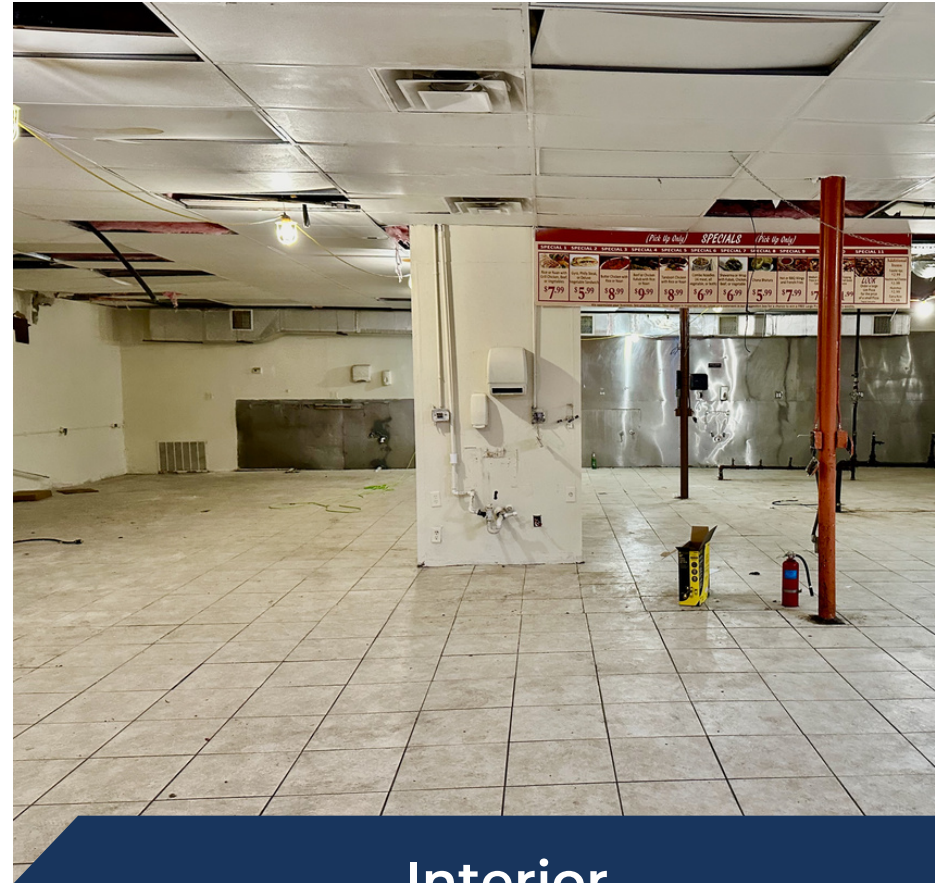


Philip Salem
512-574-5025
philip@midwayrealtytx.com

The information provided in this leasing flyer is for general informational purposes only. While we strive for accuracy, we make no representations or warranties of any kind, express or implied, about the completeness, accuracy, reliability, suitability, or availability of the information contained herein.

2820 Guadalupe

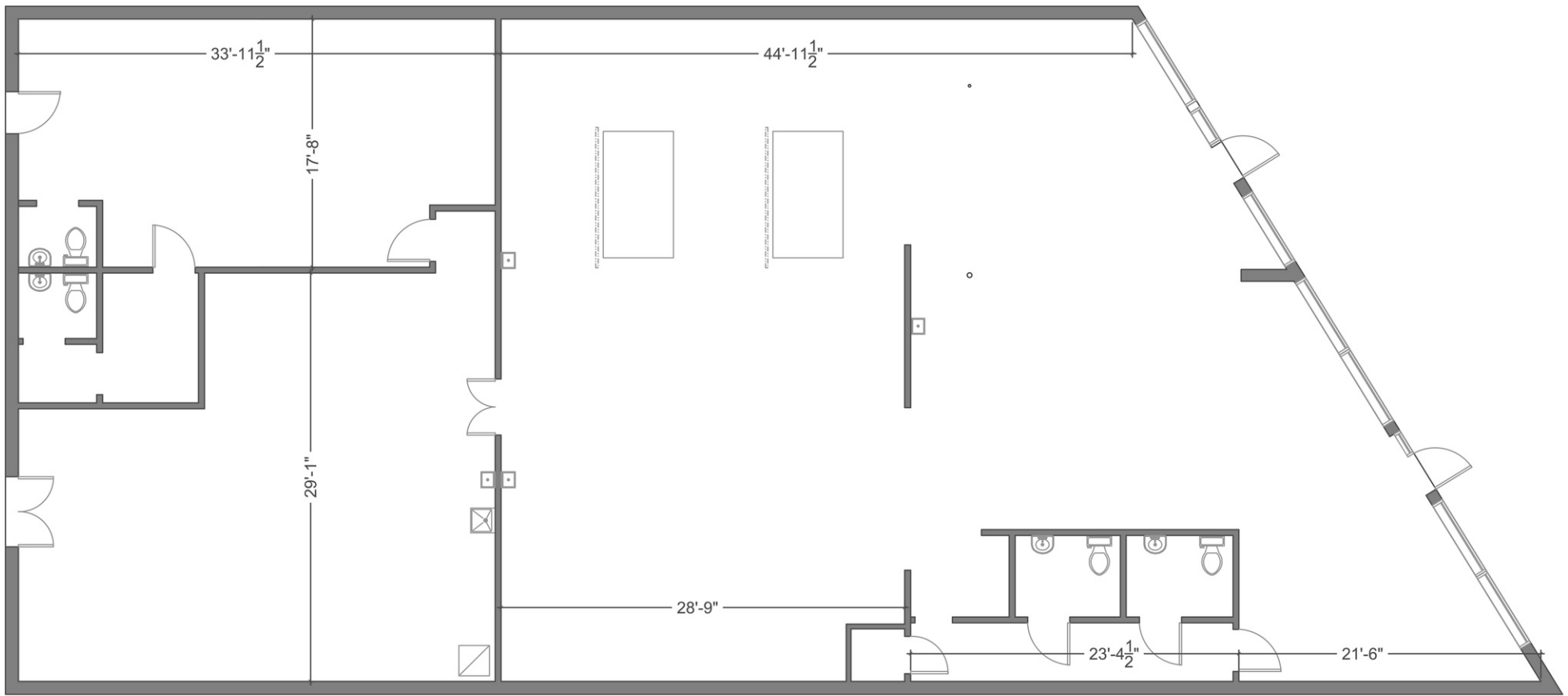
ADDRESS	2820 Guadalupe St, Austin, TX 78705
TOTAL SF	4,632 SF
AVAILABILTY	1,400-4,632 SF <i>*Immediately</i>
RATE	\$22.00 NNN
FEATURES	Located on "The Drag" Walking distance from University of Texas; 52,000+ student and 3,000+ faculty Heavy foot and car traffic (36,000 VPD)



Interior



Philip Salem
512-574-5025
philip@midwayrealtytx.com



Existing Main Floor Plan

Scale: 1/8"=1'-0"

0 1'-0"

TOTAL 4693 sf

